



HOPE CHANGE EQUITY COMMITMENT COMMUNITY

Access Community Health Centers • Annual Report 2021

Hope and Change: The Year Ahead



The past year was unlike anything we've experienced. We recognize the great difficulty the pandemic posed for Access and the patients we serve. At the same time, we are proud of the work we've done to adapt to our new reality and for the care we've provided for our patients.

Now more than ever community health centers are making a difference for the most vulnerable people in our region, our state and our country.

There are more people who need the unique set of services that we provide for our patients. We will continue to help them address the challenges of the pandemic and assure that every Access patient has the opportunity to be healthier.

The COVID-19 vaccines are the keys to moderating and eventually ending the pandemic. We will continue to inform and educate our patients about the benefits of the vaccine, and work to vaccinate those who haven't received it. Over the coming months, this will include adults who are hesitant to receive the vaccine, children who are not currently eligible for the vaccine, as well as any groups that may need an additional vaccine dose.

Community health centers like Access are unique in their ability to provide an enhanced health care home with medical, dental, behavioral health and low-cost pharmacy services. This is especially important as we see Black, Indigenous, People of Color (BIPOC) communities who continue to be more adversely affected by the pandemic.

In the coming year, we will grow to serve more people who need us. We are adding medical providers, dentists, dental hygienists, behavioral health consultants and patient resource specialists.

We will meet more of the demand for our services from people without health insurance. Our patients continue to struggle with fallout from the pandemic. Many experienced job insecurity, financial difficulties, and stress from children schooling virtually from home. Our community resource team will continue to connect patients to the resources they need to stay healthy and improve their lives.

Our behavioral health and medical teams will improve and expand our substance use disorder treatment services. The opioid epidemic continues, and the pandemic has led to increased levels of overdoses and deaths throughout our country. We are expanding medication-assisted treatments to our patients who need this important service.

Our dental team recently began using the Epic electronic dental software, which is helping us expand our dental practice and better integrate our medical and dental services.

We are resuming our longstanding partnership with the Madison and Sun Prairie school districts to resume the Celebrate Smiles program. After an absence of more than a year, our presence will once again provide dental services in the schools for children who would otherwise go without care.

We are expanding our dental clinic in Dodgeville to care for more people throughout western Dane County as well as Columbia, Green, Sauk, Iowa, Lafayette, Grant and Richland counties.

We will also continue to implement many of the best practices we developed during the pandemic including telehealth, COVID testing and vaccination and rapid cycle improvement to make our care more effective and convenient for our patients.

Even though the year was difficult, we witnessed first-hand the resiliency, courage, and compassion of our patients, our staff and the people who support us in the community. All that effort and support sustains us and allows us to build our organization for the future. It also makes us keenly aware

how much we are all connected in making our community a better place. Our staff, our patients and our supporters are all an active part of an effective team who share directly in our organization's goals and the future of our community.

Thank you for your ongoing support as we navigate the pandemic and grow to serve more people who need us.

Ken Loving, MD
Chief Executive Officer

The children of Midvale Elementary School, working with art teacher Meri Lau, create artwork throughout the year for our Joyce & Marshall Erdman Clinic. Their creativity, talent and enthusiasm brings joy to both our patients and staff. We are proud to share their work as part of our Annual Report this year.

Equity: Supporting Neighborhoods, Empowering People

Access serves the greater community by providing care to people who would otherwise have no health care available. This includes people of all ages, ethnicities and cultures. We work to help patients overcome any barriers to health care they may be experiencing, such as lack of insurance or inadequate transportation.

We know the impact from the COVID-19 pandemic will continue for our community, and that more people will need our care. We want to be able to help as many as possible in the months and years ahead.

Given how communities of color continue to face discrimination and violence and a disproportionate burden from the pandemic, there is still much work to do to make our community healthier and stronger.

At Access, we work to make sure each and every patient that comes through

our doors receives the help they need in a consistent and caring manner. By receiving care in a language that is their own, by having a diverse staff that mirrors their friends and family, and by having clinics located close to their home – these unique aspects of our care mean so much to the diverse communities we serve.

Additionally, we have specialists on staff who work with our patients and their families to find any additional resources they may need. We have an ability to offer resources that can help them receive the immediate care they need at our clinics and throughout the community.

Over the past year, we have grown and evolved to accommodate the needs of our rapidly changing society. We are a part of a community-wide effort to help fight the pandemic and the many challenges that it has worsened, including homelessness, poverty and equal access to health care.

We have collaborated with our partners to tackle the enormous issues that we all face today, and have worked collectively to make improvements in the health of our community. We are a member of the Dane County Health Council, whose members include: UW Health, SSM Health-St. Mary's Hospital, UnityPoint Health - Meriter, Group Health Cooperative of South Central Wisconsin, the Madison Metropolitan School District, United Way of Dane County, and Public Health Madison & Dane County.

Additionally, Access continues its partnerships with like-minded organizations in the neighborhoods we serve, including One City Schools, The Foundation for Black Women's Wellness, The Hmong Institute, Centro Hispano and Second Baptist Church.

These collaborations are an example of the good that can be done when we

work together for a common goal. We are thankful to be able to do more and reach more people because of these relationships, and look to strengthen this work in the years to come.

The pandemic has taught us that we need to stay nimble, so that when new needs arise, we can act quickly to make a positive impact. At Access, we have a committed and hardworking staff who have been on the front lines of the pandemic from Day 1 and are devoted to the patients we serve. Our Board of Directors is diverse, experienced and actively guiding our work.

All of our work is based on empowering the patient, supporting neighborhoods and building community. These are the guiding principles of the care we provide and the impact we hope to make in the community.

We have the great opportunity to improve health equity in our community because of the support from people like you. Together, we can be sure that equitable health care is achieved at Access and remains a core tenet of our care into the future for the people in our community who need us most.



Commitment: Transforming Care During COVID-19

The pandemic continues to evolve – and will continue to do so for the foreseeable future. As we navigate our way through the pandemic, we continue to update our care to meet the needs of our patients and community. The ability to do so has been our greatest strength during this difficult time.

As the COVID-19 pandemic began, we adjusted our care model quickly to meet the immediate needs of our patients. We created what was essentially a new clinic – our Respiratory Clinic – to care for our patients with urgent respiratory symptoms, including symptoms of COVID. This helped us ensure that we could safely care for patients with urgent non-respiratory needs, and thus greatly limit staff and patient exposure at other clinic sites.

The Respiratory Clinic, starting at our Joyce & Marshall Erdman Clinic and eventually moving to our William T. Evjue Clinic, was separated from our other services to maximize the safety of our patients and staff. In the 15 months that we operated

the Respiratory Clinic, we provided more than 4,500 visits to patients with respiratory symptoms and other urgent medical and dental needs, and ran more than 4,000 COVID tests.

Eventually the volume of patients seen in the Respiratory Clinic decreased, and we closed that clinic on July 5. Although safety remains our highest priority, closing the clinic allowed us to ensure that our patients can be cared for at their preferred clinic, by their primary care provider, for both urgent and ongoing health care needs. If needs change, we have the ability to re-open the clinic to our patients and the community and have the organizational structure in place to do so efficiently and effectively.

We were able to close the Respiratory Clinic because of the success Access and our community partners have had in providing COVID vaccines to our community. Access began providing vaccinations to our staff and patients in January.

Throughout the winter and spring, our vaccination clinics helped our patients and staff achieve protection from the virus that has affected our community in so many ways. Since the beginning of the year, Access has provided the vaccine to almost 6,000 individuals. This includes patients, Access staff members and staff of community partners.

We continue to outreach to vaccinate more patients at both of our medical sites. In the not-too-distant future, our focus will certainly be turning to providing booster shots to those who have already received the vaccine, and to vaccinate children who are currently not eligible to receive the COVID vaccine at this time. At Access, we currently provide adolescents ages 12 to 17 with the Pfizer vaccine, and will be ready to begin offering younger children the vaccine when they become eligible in the coming months.

Children make up 40 percent of our patient population at Access. Offering

them the ability to become fully vaccinated and helping them return to a sense of normalcy both inside and outside of school will be a central part of our care for the coming year.

Since the pandemic began, every direct care provider and support staff member needed to quickly change the way they deliver care to prioritize safety for patients and staff alike. We have relied on technology to communicate with our patients across all three of our areas of service.

Our telemedicine efforts have allowed us to provide safe and timely care to our patients in need and meet patients where they are. More people are accessing medical and behavioral health care than ever before through telehealth. These “virtual visits” have broken down barriers to care – allowing people to access care quickly and easily – and have helped improve health equity.

COVID continues to affect our patients in many ways beyond just their health. The economic and social fallout of the pandemic has taken a toll on our vulnerable patient population. Our Patient Resources team has been there to help patients who may be experiencing hardship during this extraordinary time. We have an ability to connect patients to the resources they need, including housing referrals and food assistance, employment guidance and affordable health care counseling.

The pandemic has unquestionably altered the way we provide care. However, many of the changes we have implemented have improved and increased care opportunities for our patients and the community. Your consistent support gives Access the ability to meet community needs in the present time, and will help us expand our work in the years to come.



Community: Building a Healthier Community Together

For the past 40 years, our community has provided unwavering support to Access and the people we serve. As you can see in the listing of our donors and supporters in the following pages, this year was no different. The support we received over the past year not only allowed Access to provide essential and innovative care during the pandemic but also plan for the needs of our patients and community for years to come.

This support has come in many different ways: gifts from people and organizations throughout the community and in-kind donations of time and services; donations of face masks for our patients from individuals and groups; local restaurants providing food for our staff; schoolchildren providing artwork for our clinics; and supporters simply spreading the word about the important work that Access is doing in the community.

All of these acts of support represent a tremendous commitment on the part of our community and reflect your belief in the work we do every day at Access. This support has helped us rebuild and adjust our care to meet the current need, while keeping an eye on the future needs of our patients and our staff.

Since the pandemic began, Access has also received significant federal support to help provide care to our patients and our community, sustain us throughout this difficult time, and allow us to adjust our care despite the financial ramifications that would occur.

With these new resources, we have been able to focus on expanding care to the most vulnerable in our community, knowing that many people still do not have access to the care they need. We now have increased capacity for COVID-19 testing and vaccination, the

ability to deliver preventive and primary health care services to people at higher risk for COVID-19 and the opportunity to expand our operational capacity throughout the pandemic and beyond.

The work of Access Community Health Centers is made complete by the support of our community. With the support of the Board of Directors, Patient Advisory Councils and the Community Advisory Council, Access can stay connected to our community needs, concerns and views to help strengthen the impact we have on our community.

Our two Patient Advisory Councils – one English speaking and the other Spanish speaking – are made up of a dedicated group of Access patients who help us improve the overall quality of care we provide to patients. As part of the Council, members are given an opportunity to use

their experience as a patient to provide feedback on topics directly affecting patient care.

Our Community Advisory Council is made up of individuals who support the work of Access through their expertise and resources. Their community involvement and partnerships will help Access better serve our patients. Council members are available to provide advice, solicit support and attend Access events at various times throughout the year.

The community is also reflected in our leadership. Our Board of Directors includes equal numbers of community volunteers and patients, who share an equal voice in the decisions and policies of our organization.

The past 18 months have been difficult. The pandemic has reinforced the reasons why community health centers like Access are so important, especially during these extraordinary times.

By no means are our efforts complete. We will work to ensure the needs of our patients are met and that we are prepared for anything that may come our way in the future. As we continue to navigate this crisis, we will need your support to ensure that people throughout our community can continue to turn to Access in their time of need.

Our efforts during this crisis would not be possible without your ongoing commitment to our work and to our patients.



With Thanks to Those Who Make Our Work Possible

Our Staff

Kristen • Amanda • Matthew • Betsy • Shannon • Chaimaa • Carmen • Afi • Sandra Donald • Carolina • Zully • Laci • Whitney • Lauren • Gregory • Katie • Travis • Angela Margaret • Christabelle • Ruth • Abigail • Rosario • Taya • Monica • Victoria • Jessica Saffiyatou • Kelly • Brittany • Mary • Angel • Sarah • Jamie • Kathy • Mary • Susan Carey • Shelly • Thulieu • Tara • Allanah • Andrea • Sarah • Jessica • Wayne • Elizabeth Michelle • Sara • Paula • Jody • Hannah • Inga • Karen • Kevin • Lisa • Nakkea • Nancy Adajo • Meghan • Jonathan • Paige • Amanda • Donna • Tiffany • Jodie • Samantha Odalys • Jennifer • Sheila • Elizabeth • Kelsey • Jennifer • Steven • Cheryl • Julia Tenisha • Rose • Ashley • Carmen • Merita • Paul • Megan • Kelsey • Thang • Viviana Yasmin • Rosabel • Melissa • Hilliary • Ashley • Parker • Joanne • Shannon • Laura Constanza • Shurelle • Sabrina • Tricia • Isabel • Katrina • Mollie • Cassandra • Kristina • Deidre Judith • Marsha • Monica • Hannah • Melinda • Elena • Rosemary • Mary • Kayla Paige • Katherine • Ana • Mai • Sue • Laura • Leticia • Sara • Victor • Ken • Calista Angela • Daniel • Shawna • Kayla Marie • Shannon • Jonathan • Lindsey • Ronnie • Jennifer Lily • Jenifer • Genoveva • Shawna • Ileana • Deborah • Crystal • Ka Bao • Dolores Kaylee • Long • Julie • Evan • Rosa • Julia • Kelly • James • Honey • Lynette • Kim Xavier • Darian • Ursula • Amy • Natalie • Errin • MaiNhoua • Karla • Elizabeth • Catherine Tiffany • Jonathon • Rita • Tammy • Scott • Sareli • Caitlin • Abner • Shannon • Rhonda Juanita • Eva • Misty • Sarah • Mya • Lynn • Leslie • Marcela • Claudia • Jailane Silvia • Martha • Brittany • Madeline • Laura • Victoria • Britta • Emily • Katherine Jessica • Tracy • Brian • Walker • Demetra • Jessica • Lyal • Alexander • Alyssa • Rachel Haley • Elissa • Brooke • Dana • Victoria • Susan • Shelby • Phia • Soua • Tchia • Mary Jennifer • Nitzaramy • Ivania • Dia • Mai Kha • Sheng • Christine • Maria • Melissa Julia • Maria • John • Tessa • Ashley • Jeffrey • Anna • Elvera • Julie • Nyree • Elizabeth

Our Community Partners

100 Black Men of Madison
Agrace Hospice & Palliative Care
AIDS Resource Center of Wisconsin
All of Us Wisconsin
American Cancer Society
American Family Children's Hospital
Anthem
ARC Community Services, Inc.
Birth to 3
Bridging Brighter Smiles
BSP Free Clinic
Care Wisconsin
Catholic Multicultural Center
Centro Hispano of Dane County
Children's Dental Center of Madison
Collaborative Family Healthcare Association
Community Connections Free Clinic
Covering Wisconsin
Dane County Department of Human Services
Dane County Health Council
Dane County Homeless Services Consortium

Dane County Interpreter Coalition
Dane County Mask Makers
Dane County Medical Society
Dean Health Plan
Delta Dental of Wisconsin
Domestic Abuse Intervention Services
East Madison Community Center
Forward Community Investments
Foundation for Black Women's Wellness
Foundation for Madison Public Schools
Great River Oral and Maxillofacial Surgery
Greater Dane Dental Society
Group Health Cooperative of South Central Wisconsin
Harambee Village Doulas Humana
Iowa County Department of Public Health
Joining Forces for Families Agencies
Journey Mental Health
La Sup
Latino Health Council
Lussier Community Education Center

Madison College
Madison Metropolitan School District
Madison Opera
Madison Pediatric Dental and Orthodontics
Madison Public Library - Goodman South Madison Branch
Meadowood Health Partnership
MEDiC Clinic
MHS Health Wisconsin
Mount Zion Baptist Church
NAACP Dane County Nehemiah
One City Schools
Oral Health Coalition of Dane County
Planned Parenthood of Wisconsin
Porchlight
Project RESPECT
Public Health Madison & Dane County
Quartz Health Solutions, Inc.
Reach Dane
Reach Out and Read Wisconsin
RSVP of Dane County
Salvation Army of Dane County
Second Baptist Church

South Central Wisconsin Area Health Education Center
Southwest Technical College
Southwestern Wisconsin Community Action Program
SSM Health
Sun Prairie School District
The Beacon
The Grow Program
The Hmong Institute
The Links, Madison
The People Company
Today Not Tomorrow
United Way of Dane County
United Healthcare Insurance Company
UnityPoint Health - Meriter
University of Wisconsin
Department of Family Medicine
Department of Internal Medicine
Department of Pediatrics
Department of Population Health Sciences
Department of Psychiatry
Department of Psychology
Department of Radiology
School of Medicine and Public Health
School of Nursing
School of Pharmacy
School of Social Work

Urban League of Greater Madison
UW Carbone Cancer Center
UW Health
Wisconsin Collaborative for Healthcare Quality, Inc.
Wisconsin Comprehensive Cancer Control Program
Wisconsin Department of Health Services
Wisconsin Institute for Healthy Aging
Wisconsin Medical Society
Wisconsin Primary Health Care Association
Wisconsin Seal-A-Smile
Wisconsin Women's Health Foundation
YMCA of Dane County
YWCA Madison



Financial Overview

Funding for Access Community Health Centers supports both patients and patient services, fulfilling our mission to improve the health and lives of the people we serve. Our diverse revenue stream enables us to grow our services in a reliable and responsible manner. The following is an overview of our finances from July 1, 2020 to June 30, 2021.

Through the support of the community and the dedication of our staff, Access has been able to navigate the complexities of the pandemic environment. The need for health care services has increased as the pandemic has progressed. With the support of increased grant funding, Access has been able to position itself to meet this need by maintaining pre-pandemic staffing levels and further investing in the infrastructure necessary to maintain high quality care while observing COVID guidelines.

The Paycheck Protection Program (PPP) provided funding to Access to help cover payroll expenses during the height of the pandemic. Access applied for \$3.6 million in PPP funding and received forgiveness for that amount this past year. In the past fiscal year, Access also applied for another \$2 million in PPP funding for which forgiveness is expected to be issued in the next fiscal year. This funding enabled Access to maintain pre-pandemic staffing levels which has served us and the community well as we are now responding to the COVID-19 Delta variant case surge. In addition to PPP funding, Access also received approximately \$1.6 million of COVID support from the Health Resources and Service Administration (HRSA) and approximately \$800,000 from the the U.S. Department of Health & Human Services (HHS) Provider Relief Fund through the CARES Act. These additional funding sources have supported investments in infrastructure and personnel that are now supporting Access’ ability to help as many underinsured and uninsured patients as possible. With the understanding that these funds are non-recurring, Access has worked to position itself for the future to maintain the ongoing ability to meet patient demand in an increasingly complex environment.

Looking forward, we expect the need for investments in infrastructure and staff to continue through the next fiscal year, especially with the increasing prevalence of the Delta variant of COVID-19. As we continue to balance the complexities of the pandemic and the needs of our patients and the community, we appreciate the continued support and look forward to further building on our mission to improve health and improve lives.

FY2021	
Revenue	
Patient service revenue (net)	\$25,472,743

Total Revenue	25,472,743
----------------------	-------------------

Expenses	
Personnel	20,106,172
Space and facilities	1,069,862
Supplies	1,681,377
Contractual	8,238,779
Depreciation	1,018,036
Minor equipment	343,347
Travel	35,541
Other	1,033,109
In-kind expenses	906,941

Total Expenses	34,433,164
-----------------------	-------------------

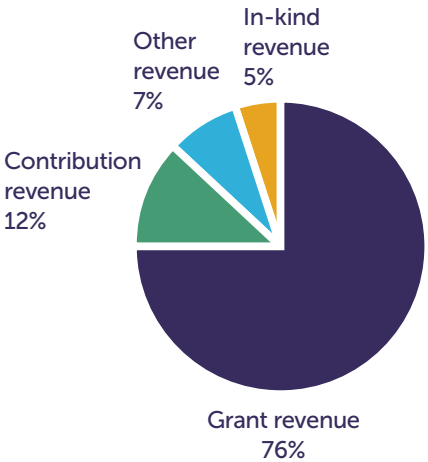
Operating Income/ (Loss)	\$(8,960,421)
---------------------------------	----------------------

Non-Operating Revenue	
Grants revenue	12,983,273
Contributions revenue	1,958,031
Other revenue	1,186,085
In-kind revenue	906,941

Total Non-Operating Revenue	17,034,330
------------------------------------	-------------------

Excess of Revenue Over Expenses	\$8,073,909
--	--------------------

FY 2021 Non-Operating Revenue Sources



Grant Revenue for COVID Relief (Non-recurring):

PPP	\$5,614,637
HRSA COVID	\$1,600,964
HHS & Cares Act Provider Relief	\$809,665
	\$8,025,266

Individual, Business and Foundation Gifts

The work of Access Community Health Centers is made possible through the generous support of our community. The following pages highlight this extraordinary support which includes gifts received, in-kind support and pledges made between July 1, 2020 and June 30, 2021.

\$200,000 and above	\$10,000-\$24,999	Neon Ringwood	\$1,000-\$2,499	Nancy Harrison Durdin & AC Durdin
Epic	Sandy & Ronald Clark	Carol & Steven Skolaski	The Alliance	Amy & Russ Hermus
Group Health Cooperative of South Central Wisconsin	Courtier Foundation, Inc.	Ladonna & Paul Smith	Alliant Energy Foundation	Joyce & Thomas Hirsch
Oscar Rennebohm Foundation Inc.	Gail & Gordon Derzon	UW Carbone Cancer Center	Anonymous	Anne Hughes & Stanley Livingston
Roots & Wings Foundation	Gay & Mark Gross	Wisconsin Comprehensive Cancer Control Program	Associated Bank	Husch Blackwell
SSM Health	Irving and Dorothy Levy Family Foundation	Wisconsin Medical Society Foundation	Juli Aulik & Troye Shanks	Tabassum Kennedy
United Way of Dane County	Jack DeLoss Taylor Charitable Trust	Wisconsin Primary Health Care Association Inc.	Ann Behrmann	Christine Kenyon
UnityPoint Health - Meriter	UW Department of Pediatrics		Boardman Clark	Paul Kundert
UW Health	Karen Walsh & James Berbee		Julie & James Bockheim	Fred Lee & Marjorie DiMaggio Charitable Fund
Wisconsin Department of Health Services	Linda Wankert-Hayden & Kevin Hayden	\$2,500-\$4,999	Martha & Jack Bowhan	Madelyn Leopold
		Anonymous	Kristi & Dave Brereton	Janet & Jay Loewi
		Terri & Dave Beck-Engel	Jean Brittian & Scott Reeder	Mary & Doug Loving
\$50,000-\$99,999	\$5,000-\$9,999	Linda Bochert & David Hanson	The Fred and Amy Broihan Charitable Fund	Meghan Lubner
Caritas Foundation	August Foundation, Inc.	Jeanne Howard & Eric Siegal	Burnside & Rollins Family Fund	Jill & Peter Lundberg
Evjue Foundation	BMO Harris Bank	Mary & Carl Gulbrandsen	Capital Times Kids Fund	Madison Gas & Electric Company
Federal Communications Commission	Cremer Foundation	Diane & Joe Krupp	Terri & Don Carufel-Wert	Amy & Jon Matsumura
Stan Kanter	Thomas & Jeanne Grist Family Fund	Laboratory Corp of America	Karen & Craig Christianson	
	Elizabeth Huebel & David Silverberg / Silverberg Huebel Fund	M3 Insurance	Susan Jane Curtis	MIG Commercial Real Estate, LLC
\$25,000-\$49,999	Thomas Kemp Foundation	Madison Anesthesiology Consultants, LLP	Betty Harris Custer & J. Corkey Custer	Sally & Mike Miley
Capital Endodontics	Nancy Loving Tubesing & Don Tubesing/Pfeifer-Hamilton Legacy Fund	Madison Top Company	Cheryl DeMars	Jeanan Yasiri Moe & Doug Moe
D&S Dental Laboratory, Inc.	Madison Rotary Foundation	Patterson Dental Supply	Erdman	Brian Mullan
Exact Sciences	Nancy Martin	Dan & Patti Rashke TASC Family Foundation	Claire Falk & Jeffrey Wells	Roseann & Brad Murphy
Jan & Bill DeAtley	Lynn & Gary Mecklenburg	Sarina Schrager & Ken Loving	Aaron Field	National Guardian Life Insurance Co.
Therese Foundation	W. Gene Musser & Gene Gudmundson	UW Credit Union	J.H. Findorff & Son Inc.	Nadine Nehls & Jeff Grossman
UW Department of Radiology	Quartz	WPS Health Insurance	Meghan & Steven Fondow	Stacey & Tyler Novogoratz
	Petra Ressler & Sven Midelfort	Julia & Matthew Wright	John J. Frautschi Family Foundation	Oregon Mental Health Services, LLC
		John and Peggy Zimdars Foundation	Pamela & Gary Gates	Errin Pfeifer & Brian Ellingboe

QTI Group	\$500-\$999	Pat Lasky & John Hanrahan	\$250-\$499	Kate Hetland, includes matching gifts from Alliant Energy Foundation
Tammy Quall & Chris Quandt	Access Sun Prairie Dental Clinic - Patients and Staff	Marilynn & Jim Loving	Paula Stec Alt & Robert Alt	Elizabeth Huebel & David Silverberg
Quarles & Brady	Julie Murphy Agnew & Matthew Agnew	Sarah & Bryan Magenheim	Linnea Anderson	Katie Hurtis
Gregory Scott Rademacher	Anonymous	Salli Martyniak & Loren Hatleberg	Marcia Anderson	Mary Jo Hussey
The John & Lorelle Raihala Fund	Linda & Dave Balsiger	Graeme Mason	Anonymous	Jeffrey Kanne
Jean Rawson	Anne & Terry Bolz	Pam & Robert McDonald	Betty Banks	Joan Karan
Diane & Layton Ridders	Lois Braun-Oddo	Jeanne & John McLellan	Laura Berger	Judy & Stuart Keel
Patrick Rollins	The Dennis & Catherine Buege Fund	Cristopher Meyer	Stephanie & Joshua Berkson	Kevin Kelly
Mary & John Rowe	Marilyn Chohaney & David Lonsdorf	Ruth & Paul Meyer	Sybil Better	Robert Koehler
Pam Ryan & Kevin Fehr	Sandy & Dana Corbett	Leslie Miller	Carola & Don Breckbill	Nancy & Andrew Kosseff
Joan Schmit	Kimila Daniels	Nicole & Peter Newcomer	Adam Brinkman	Tanya Lettman-Shue
Melissa Auchard Scholz & John Karl Scholz	Diane & Robert Dempsey	Doug Norgord	Laura Brown & Mark Shahan	Terry Little
Joyce & Leonard Schrager	Mary Ann & Greg Dombrowski	Sheri Pollock	Michael Brunner	Linda Loving
Elizabeth Zeidler Schreiter & Bryan Schreiter	Jennifer Edgoose	John Powell	Kristin & Bruce Bull Lyon	Julie Luecke & John Rasmussen
Julie Segar	Angie & Bob Flannery	Sherry Reames	Walter Burt	John Minnich
Kathryn & William Sergenian	Gracie & Andrew Foxwell	Cheryl Robinson & Leonard Cizewski	Chris Chiles & Brian Larson	Mary & William Niedermeier
Shain Family Fund	Julie & John Franz Paperboat Fund	Louise Root-Robbins & Kenneth Robbins	The Elly & Tim Chybowski Family Charitable Fund	Erin Thornley Parisi & Joe Parisi
Brian Shoup	Lisa Gaumnitz & Steve Silverberg	Sarah Rowe & Tim Kreft, includes matching gifts from Alliant Energy Foundation	Wendy & Frederick Coleman	Promega Corporation
Jennifer & Kevin Stevens	Kara Gill	Cathy & Adam Schrager	Amy & Brian Collien	Tyler Prout
Strand Associates, Inc.	Amie Goldman & David Gundersen	Peggy Sleeper & Bill Greer	Prasad Dalvie	Sherry Reames
Dawn Stucki	Lauren & John Greene	June Sochen	Charlestine Daniel	Andrew Ross
Suleski Family Fund	Sarah Grimes	Stevens Family Fund	Susan & Richard Davidson	Linda Rull
Mary Tatgen & Robert Lange	James Haine	Valerie Stromquist	Cheryl & Richard Donkle	M. Therese Ruzicka & Ronald Luskin
Julia Unger & John-Paul Yu	Paul Harrison	Wendy Swanson	Dr. Aaron and Monica Dunn Fund	Mary & Rob Savage
Wegner LLP CPAs & Consultants	Stephanie Harrison	Timothy Szczykutowicz	Terry Edelman	Kristi and Robin Shepard
Julia Weiser	Matthew Kalscheur	Denes Tobie	Joju & Oluyemi Falomo	Beth & Jerry Simmons
Sara Williams	Kobishop Family Fund	Michael Tuite	Farmers Savings Bank	Anthony Sis
Wisconsin Realtors Association, Inc.	Valerie & Charles Kime	Franny Van Nevel	Claire Kelly Finando	Emilie Songolo
Michael Wolff	Amanda Kita-Yarbro & Christopher Yarbro	Margaret & Eric Wilcots	Annette Gendron-Fitzpatrick & James Fitzpatrick	Kristi Thorson
Mark Xistris	Warren Kmiec	Nicole Zaroni Health Endowment	Eve & Marc Galanter	Mary Alice Tillery
	Patricia Kokotailo		Sarah & Scott Glasrud	Andrew Tubesing
	Kurtz Family Foundation		Brandee Godfrey	United Way of Greater Milwaukee
			Janice Grutzner	James Van Den Brandt
			Elizabeth Harper	
			Rebecca & Joe Haymaker	
			Janel Heinrich	



Karil & Mark Walther
Margaret & Eric Wilcots
Timothy Ziemlewicz

\$100-\$249
Abigail Abonogwa
Kerry Ahrens
Doroteia Alexieva & Alex Andre
Gail Allen & Jeff Hoerning
Anonymous
Judith Aubey
Greg Avey
Angela & Jeff Bartell
Julie Shiner-Bazan & Bernard Bazan
Penelope & John Beasley
Daryn Belden
Marilaine Blair-Patrick & Michael Patrick, includes matching gift from Capitol Bank
Radhika & Dan Bradley
Pat Brady & Bob Smith

Kay Brewer
Barbara & Lester Brower
Thomas Buresh
Amy & Peter Callies
Max Carbon
Melissa & Dan Carlson
Martha & Charles Casey
Peter Chase
Memee Chun
Dorothy & Ed Churchwell
Roseanne Clark
Mary & Craig Clemons
Louise & Robert Coates
Sheila & Marcus Cohen
Brittany & Joel Coleman
Karen Menendez Collier
Mark Connolly
James Conway
Jeremiah Cook
Bridget Crean Williams
Cinda & Mark Dalebroux

Thuha Dang
Shirley & Fred Davie
Jenni & Kirkland Davis
Bruce Deming
Carol Diamond & Howard Rowley
Barbara & David Diercks
Sandra Dolister
Regina & George Dunst
Jon Fadness
Laura Fay
Rachel Friedman
Donna Friedsam & Tim Astfalk
Cyndy Galloway & Peter Fisher
Valerie Gilchrist & William Brisbin Scott
Andrea Gilmore-Bykovskiy

Girls on the Run of South Central Wisconsin
Allison Grayev
Ei Terasawa Grilley
Ann Haase Kehl
Dayle Haglund
Lori & Keith Hanson
Josephine Harter
Haveman Wolfe Charitable Fund
Susan Haynes
Keith Heimforth
Barb Hernandez
Rosabel Hernandez Brandt
Leonore Hill
James Holmes
Elizabeth Hudson
Edwin Hughes
Karley & Matthew Hujet
Paul Henry Hunter
Jose Javier & Steve Strode

Kayla Jensen
Kattia Jimenez
Kristina Jones
Leah Kechele
Nancy Keller
Marilyn Kile
David Kim
Newrhee Kim
Jeffrey Michael Knutsen
Denise Kohout
Cynthia Kosloski
James Krikelas
Kathy Kuntz & Henry Huemmer
Robin Lankton
Katrina Larson
Helen & Ken Lee

Rita Lloyd
Susan & Brian Lochen
Jan Loisel
Sarah & David Lundey
Jane Lyon
Tina Marie Maes
Angela Marchant
Patricia Marchant
Kristin Martin & Laura Miller
Camilla Matthews
Jolene & Louis Molnar
Stefanie Moritz & Vincel Jenkins
Lindsey Morris & Carey Dachik
Nathan Morris
Pamela & Christopher Neumann
Alida Evans & Joseph Newman
Long Nguyen
Linda Baldwin-O'Hern & Vince O'Hern

Honey Pa
Stacie Paulson
Laura Peck & Greg Anderson
Scott Perlman
Anne Slaughter Perrote
Mary & Peter Plane
Krishna & Bishnu Pradhan
Allison & Pratik Prajapati
Barbara & Michael Pratzel
Christine & Geoffrey Priest
Pamela Propeck
LuAnn Quella
Kari Race
Thomas Ragatz
Sue & Jack Rayburn
Paul Reichel
Kassandra Remo
Janet Reschke
Gerald Ring
Jessica Robbins
Jo Anne Robbins & David Falk
Robin & Dan Ryan
Christine Schey & Nadine Bergstrom
Helen Schneider
Brian Schoeneck
Cynthia & Donald Schott
Asha Odessa Schumaker
Dan Seering
Kathleen & Ron Shanovich
Emilie Shields
Tom Shorter
Wren Singer
Rebecca Sippel
Barbara Snell & Marvin Balousek
Christine Spier
Sheryl & Jeff Spitzer-Resnick

Mary Ellen Spoerke
Carrie Stellpflug
Jason Stephenson
Jonathan Streeter
Roberta Strigel
Michael Thompson
Karen Timberlake
Jackie Tomberlin
David Troyer
Luke Vaneynde
Teri Varney
Chelsea & Mike Walmer, includes matching gifts from American Family Insurance Dreamers Foundation
Brenda and Thom Weiss Family Giving Fund
Beth Whittemore
Lee Wilke
Kristi & Roger Williams
Vicki & John Wilson
Kelsey Nicole Wishowski
Katherine Woytych
Bradley Wuotila
Julie Yearling
Joanie Dexter Young & Roger Young
Susan Zahner
Janet & Richard Zeidler
Karen & Thomas Zilavy

\$1-\$99
Amanda Acosta
Roxanne Aehl
Susan & Michael Ales
Emy & Irmgard Andrew
Anonymous
Jodi Auron

Mary Bachhuber
Mike Bachhuber
Allison Baird
Ariel Barak
Edward Bergen
Margaret Birrenkott
Matthew Blasinski
Annie Bockhop
Kailee Borchert
Victoria Boucher
Elizabeth Boyle
Brandi Branchfield
Sue & William Bridson
Rebecca Brynelson
Betty & Robert Bush
Carolyn & John Cain
Becky Callan
Linda Clark
Juanita Comeau
Melissa Craig
Katie Crawley & Timothy Dybevik
Chelsea Crooks
CUNA Mutual Foundation
Phil Danzer
Alexandra De La Hortua Celi
Patricia Eddings
Laurie Ellis
Jody Epstein
Jeanne Erickson
Kristi Everson
Susan Fadness
Miriam Farber
Beth Jones Fiore & Michael Fiore
Evelyn Fox

Anna Garner-Strickon
Claire Gervais & Dave Blouin
Kelsey Gomez
Gwendolyn Gonzalez
Scott Greene
Tenisha Grimmer
Teodora Hellen
Kelli Hellenbrand
Sue Hilgemann
Nicole Hoffman
Carol Hulland
Kevin Johnson
Elsa Johnson
Erin Joswick
Lucetta & Howard Kanetzke
Christopher Keenan
Emily Kletzien & Bruce Findley
Erwin Koenig
Jill Korey & Jon Rozenfeld
Rena Kornblum
John Kuehl
Matthew Larson
Audrey Larson
Sandra Levin
Yvonne Lindl
Susan Lloyd
Katherine Loving
Calista Lowe
Alan Luner
Kathryn Madden
Kim Banks Mayer
Judy McGinley
Casey McRoy
Amy & Adam Mertz
Keri Lee Miller
Irene Mirkin

Eric Mischo
Lily Mize
Sue & Michael Mohoney
Tracy Joy Mores
Crystal Morgan
Ellen Morin
Cheryl & Mike Moskoff
Christopher Murphy
Margaret Murray
Phyllis Ninedorf
Karen Nissen-Boryczka
Susan Nossal
Timothy O'Donnell
Julia & Dan O'Donnell
Ruth Hilma Ohlogge
Irene & John Olson
Paul Patenaude
Isaiah Peacott-Ricardos
Thomas Pearce
Chris & Greg Percy
Jill & Jacob Pfeiffer
Berit Poser & Ross Rehfeldt
Mary Ann & Richard Reale
Kate & Pat Remington
Rhonda Robins

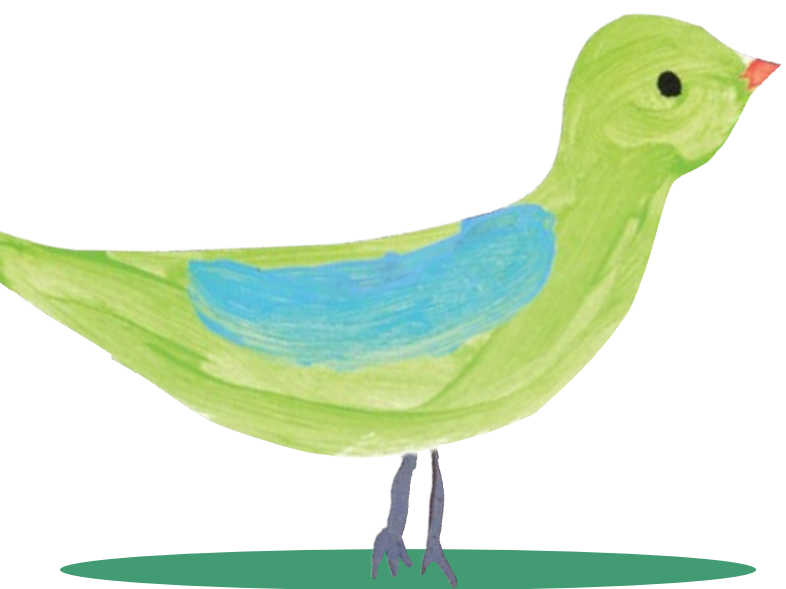
Elaine Rosenblatt
Emily & Henry Sanders
Ellyn Satter
William Schaefer
Maggi Schrader
Lucyna & Yoram Shenker
Alexander Smith
Cynthia Soczka
Roger Sunde
Malia Thao
Carol Tomerlin
Carolyn & Juan Torales
Diane Treis Rusk
Mary Virgin
Jodi Wagner
Benita Walker & Joseph Senulis
Jill Watson & Thomas Williams
Barbara Weber
Susan & Michael Wildrick
Jane Wolking
Ryan Woods



Celebration of Service Sponsors

For more than 20 years, our community has gathered together at our Celebration of Service Dinner. Due to the COVID-19 pandemic, our celebration was held virtually this year, with over 650 taking part in the event. We would like to thank the sponsors of this year's event who generously supported our Celebration this year during the pandemic.

Benefactor	Supporter	Table	
Group Health Cooperative of South Central Wisconsin	BMO Harris Bank	The Alliance	Michael Best Strategies
UW Health	Johnson Financial Services	Associated Bank	MIG Commercial Real Estate, LLC
Quartz	Karen Walsh & Jim Berbee	Boardman Clark	Jeanan Yasiri Moe & Doug Moe
UnityPoint Health - Meriter		Martha & Jack Bowhan	Roseanne & Brad Murphy
Leader	Champion	Karen & Craig Christianson	National Guardian Life Insurance Co.
Epic	Laboratory Corp of America	D&S Dental Laboratory, Inc.	QTI Group
Exact Sciences	M3 Insurance	Cheryl DeMars	Tammy Quall & Chris Quandt
SSM Health	Patterson Dental Supply	Erdman	Quarles & Brady
	UW Credit Union	J.H. Findorff & Son Inc.	Wegner LLP CPAs & Consultants
	WPS Health Insurance	Husch Blackwell	
		Christine Kenyon	
		Jill & Peter Lundberg	
		Madison Gas & Electric Company	
		Amy & Jon Matsumura	



Honorary Gifts

In honor of Gail & Gordon Derzon <i>Access Community Health Centers Development & Communications Staff</i>	In honor of James Harrison <i>Nancy Harrison Durdin & AC Durdin</i> <i>Paul Harrison</i>	In honor of Paul Harrison <i>Gail & Gordon Derzon</i> <i>Elizabeth Hudson</i> <i>Jan Loiselle</i> <i>Salli Martyniak & Loren Hatleberg</i> <i>Louise Root-Robbins & Kenneth Robbins</i>
In honor of Wisconsin Bankers Association - Power of Community Week <i>Marilaine Blair-Patrick & Michael Patrick</i>	In honor of Charlie & Mary Mussey <i>Susan Haynes</i>	
In honor of Capitol Bank & Jim Dolister <i>Sandra Dolister</i>	In honor of Larry Lundy <i>Mary & Peter Plane</i>	In honor of Beth Potter and Robin Carre <i>Patricia Kokotailo</i> <i>Kathryn Madden</i> <i>Mary & Peter Plane</i> <i>Tammy Quall & Chris Quandt</i>
In honor of Lori Cushman <i>Vicky & David Franchino</i>	In honor of Steve Iselin <i>Pure Sweet Honey Farm Inc.</i>	
In honor of Tammy Quall <i>Lisa Gaumnitz & Steve Silverberg</i>	In honor of Linda Breunig <i>Dan & Patti Rashke</i> <i>TASC Family Foundation</i>	
In honor of All Access Staff <i>Valerie Gilchrist & William Brisbin Scott</i>	In honor of Louisa Zeidler <i>Elizabeth Zeidler Schreiter & Bryan Schreiter</i>	
In honor of Nancy Martin <i>Lori & Keith Hanson</i>	In honor of Brian Anderson <i>Wisconsin Realtors Association, Inc.</i>	
	In honor of Elizabeth Zeidler Schreiter & the Access Behavioral Health team <i>Janet & Richard Zeidler</i>	



Access Board of Directors

Brenda Gonzalez, President
Peng Her, Vice President
Mark Xistris, Treasurer
Brian Collien, Secretary
Aleksandr Kladnitsky, Past President
Marcia Anderson
Lisa Ellinger
Andrew Hitt
Kristi Jones
Pratik Prajapati
Chris Queram
Sean Saiz
Daniel Sims
Patricia Tellez-Giron, MD
Eva Vivian

Senior Leaders

Ken Loving, MD
Chief Executive Officer
Kevin Fehr, MD
Chief Medical Officer
Joanne Holland, CPA
Chief Financial Officer
Dan Martin
Chief Clinical Services Officer
Errin Pfeifer, DMD
Chief Dental Officer
Tammy Quall
Chief Administrative &
Strategy Officer
Elizabeth Zeidler Schreiter, PsyD
Chief Behavioral Health Officer

Access Community Advisory Council

Juli Aulik	Mary & Carl Gulbrandsen
Betty Banks	Joyce & Thomas Hirsch
Dave Beck-Engel	Sean LaBorde
Kim & Michael Bentz	Jan Loiselle
Laura Berger	Jill & Peter Lundberg
Micaela Berry	Salli Martyniak
Shiva Bidar-Sielaff	Amy & Jon Matsumura
Linda Bochert & Dave Hanson	Gary Mecklenburg
Martha & Jack Bowhan	Sally & Mike Miley
Kristi Brereton	Jeanan Yasiri Moe & Doug Moe
Karen & Craig Christianson	Renee Moe
Karen Menendez Coller	Roseann & Brad Murphy
Anthony Cooper	Tia Murray
Debbie Cray	Leslie Orrantia
Betty Harris Custer & J. Corkey Custer	Tami & Hamang Patel
Charlestine Daniel	Aaron Perry
Jan & Bill DeAtley	Lisa Peyton-Caire & Kaleem Caire
Gail & Gordon Derzon	Petra Ressler & Sven Midelfort
Sara & Andrew DeTienne	Larry Sain
Marjorie DiMaggio	Paul Terranova
Gabe Doyle	Linda Vakunta
Katherine Eby	Mai Zong Vu
Natalie & Dan Erdman	Lucretia Sullivan Wade & Anthony Wade
Amie Goldman & David Gundersen	Karen Walsh
Sarah Grimes & Stan Kanter	Julia Wright
Jeff Grossman	

Access Patient Advisory Council

Tanya Cohen
Alexis Jordan-Jackson
Angela Jordan-Jackson
Pamela McDonald
Annetta Price
Paul Quinn
Margaret Rubio
Valerie Shatavsky

Access Latinx Patient Advisory Council

Ismael Castellanos
Berlin Victor Espinal
Maria Victoria Espinal
Margarita Martinez Lopez
Mayerling Machado Marquez
Elizabeth Martinez
Francisco Martinez
Paula Leyva Martinez
Silvia Ortega
Susana Canales Ortiz
Norma Ramirez Pardon
Celsa Rodriguez
Valentina Perez Tovar



Dodgeville Dental Clinic
103 East Fountain St.
Dodgeville, WI 53533

Joyce & Marshall
Erdman Clinic
2202 South Park St.
Madison, WI 53713

William T. Evjue Clinic
3434 E. Washington Ave.
Madison, WI 53704

Sun Prairie Dental Clinic
1270 West Main St.
Sun Prairie, WI 53590

Wingra Family
Medical Center
1102 S. Park St.
Madison, WI 53715

